



REYNA SILVER
TRUDEAU GOLD PROJECT



RSLV.TSXV

Trudeau Gold Project
Quebec, Canada
October 2020



Disclaimers

The information contained in this presentation (“Presentation”) is being offered by Reyna Silver Corp. (the “Company”) for information purposes only. This Presentation is not for release, distribution or publication into or in the United States or any other jurisdiction where applicable laws prohibit its release, distribution or publication.

This Presentation is not a prospectus, offering memorandum, advertisement, or solicitation and does not constitute or form part of, and should not be construed as, an offer or invitation to sell or any solicitation of any offer to purchase or subscribe for any securities of the Company in Canada, the United States or any other jurisdiction. Neither this Presentation, nor any part of it nor anything contained or referred to in it, nor the fact of its distribution, should form the basis of or be relied on in connection with or act as an inducement in relation to a decision to purchase or subscribe for or enter into any contract or make any other commitment whatsoever in relation to any securities of the Company. No representation or warranty, expressed or implied, is given by or on behalf of the Company, its directors and affiliates or any other person as to the accuracy or completeness of the information or opinions contained in this Presentation; and no liability whatsoever is accepted by the Company, its directors and affiliates or any other person for any loss howsoever arising, directly or indirectly, from any use of such information or opinions or otherwise arising in connection therewith. No investment advice is offered or deemed to be offered under the Presentation, and any prospective investor should consult with his own legal, investment, accounting and tax advisors for determination of, among other things, suitability of investing in securities of the Company.

Purchasing securities of the Company should be considered a risky investment as the securities are speculative in nature and are appropriate only for investors who are prepared to have their money invested for a long period of time and have the capacity to absorb a loss of some or all of their investment.

No reliance may be placed for any purpose whatsoever on the information or opinions contained in this Presentation or on its completeness, accuracy or fairness. Readers should not treat the contents of this Presentation as advice relating to legal, taxation or investment matters, and must make their own assessments concerning these and other consequences of the various investments, including the merits of investing and the risks. Readers are advised to consult their own personal legal, tax and accounting advisors and to conduct their own due diligence and agree to be bound by the limitations of this disclaimer.

United States Matters

The securities of the Company referred to herein have not been and will not be registered under the U.S. Securities Act of 1933 (the “Securities Act”), as amended, and may only be offered, and this presentation may only be made, to persons within the United States that are “qualified institutional buyers” within the meaning of Rule 144A under the Securities Act. The Company does not have a class of securities registered with the Securities and Exchange Commission (the “SEC”). The Company prepares its disclosure in accordance with the requirements of applicable securities laws in effect in Canada, which differ significantly from the requirements of U.S. securities laws.

Cautionary / Forward Looking Statements



Forward-Looking Statements

Certain statements contained in this presentation constitute “forward-looking information” or “forward-looking statements” (collectively, “forward-looking statements”) within the meaning of applicable Canadian and United States securities laws relating to, without limitation, expectations, intentions, plans and beliefs, including information as to the future events, results of operations and the Company’s future performance (both operational and financial) and business prospects. In certain cases, forward-looking statements can be identified by the use of words such as “expects”, “estimates”, “forecasts”, “intends”, “anticipates”, “believes”, “plans”, “seeks”, “projects” or variations of such words and phrases, or state that certain actions, events or results “may” or “will” be taken, occur or be achieved. Such forward-looking statements reflect the Company’s beliefs, estimates and opinions regarding its future growth, results of operations, future performance (both operational and financial), and business prospects and opportunities at the time such statements are made, and the Company undertakes no obligation to update forward-looking statements if these beliefs, estimates and opinions or circumstances should change. Forward-looking statements are necessarily based upon a number of estimates and assumptions made by the Company that are inherently subject to significant business, economic, competitive, political and social risks, uncertainties and contingencies. Forward-looking statements are not guarantees of future performance. In particular, this presentation contains forward-looking statements pertaining, but not limited, to: expectations regarding the price of silver and sensitivity to changes in such prices; industry conditions and outlook pertaining to the silver market; expectations respecting future competitive conditions; industry activity levels; and the Company’s objectives, strategies and competitive strengths.

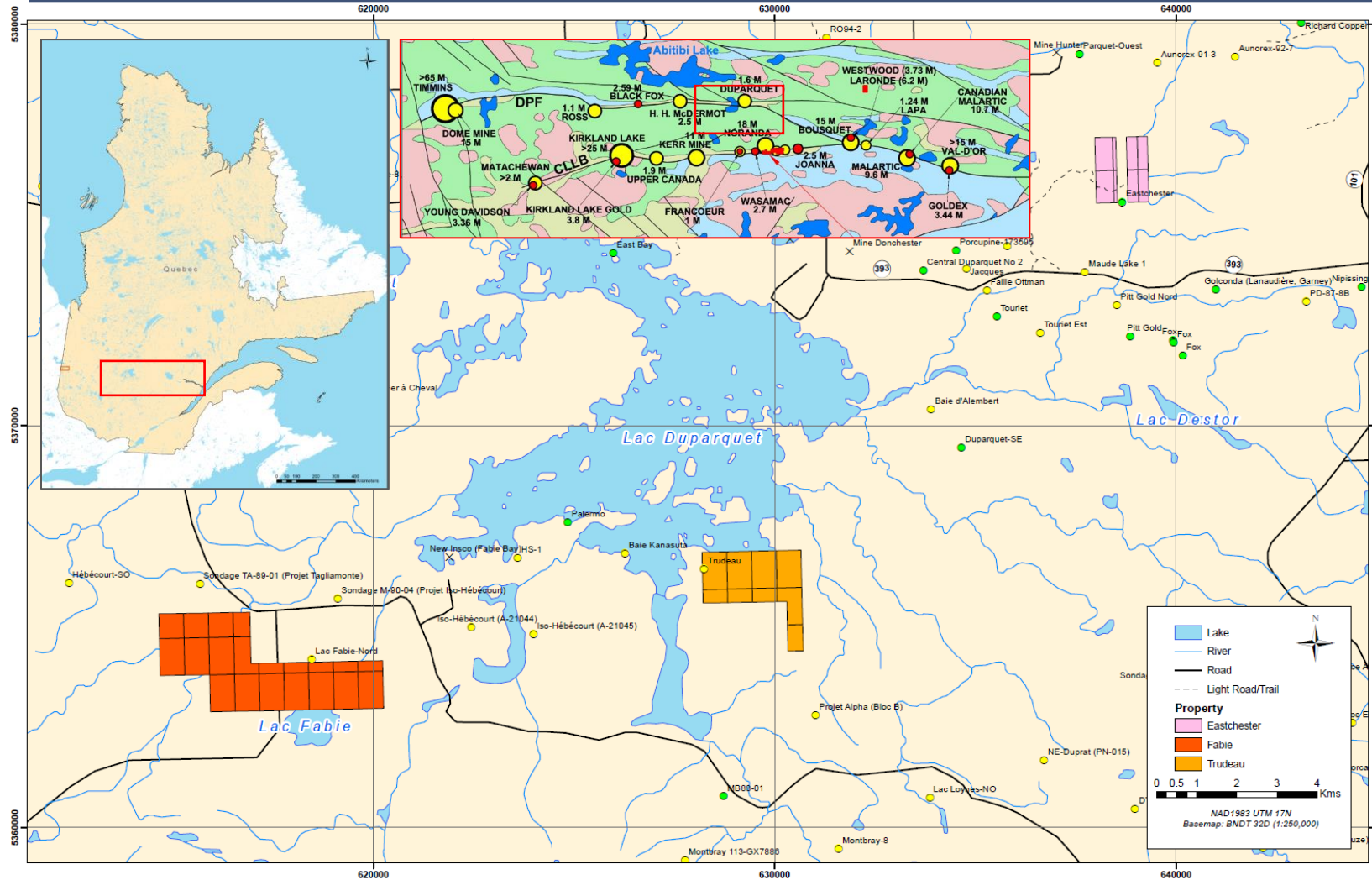
By their nature, forward-looking statements involve numerous current assumptions, known and unknown risks, uncertainties and other factors which may cause the actual results, performance or achievements of the Company to differ materially from those anticipated by the Company and described in the forward-looking statements.

With respect to the forward-looking statements contained in this presentation, assumptions have been made regarding, among other things: current and future silver prices; future global economic and financial conditions; demand for silver and related products, and the supply of silver; the accuracy and veracity of information and projections sourced from third parties respecting, among other things, future industry conditions and demand for silver; and, where applicable, each of those assumptions set forth in the footnotes provided herein in respect of particular forward-looking statements.

A number of factors, risks and uncertainties could cause results to differ materially from those anticipated and described herein including, among others: volatility in market prices and demand for silver; effects of competition and pricing pressures; risks related to interest rate fluctuations and foreign exchange rate fluctuations; changes in general economic, financial, market and business conditions in the silver and precious metals industry; alternatives to and changing demand for silver; potential conflicts of interests; and actual results differing materially from management estimates and assumptions.

Although the Company has attempted to identify important factors that could cause actual actions, events or results to differ materially from those described in its forward-looking statements, there may be other factors that cause actions, events or results not to be as anticipated, estimated or intended. There can be no assurance that forward-looking statements will materialize or prove to be accurate, as actual results and future events could differ materially from those anticipated in such statements. The forward-looking statements contained in this presentation are expressly qualified by this cautionary statement. Readers should not place undue reliance on forward-looking statements. These statements speak only as of the date of this presentation. Except as may be required by law, the Company expressly disclaims any intention or obligation to revise or update any forward-looking statements or information whether as a result of new information, future events or otherwise.

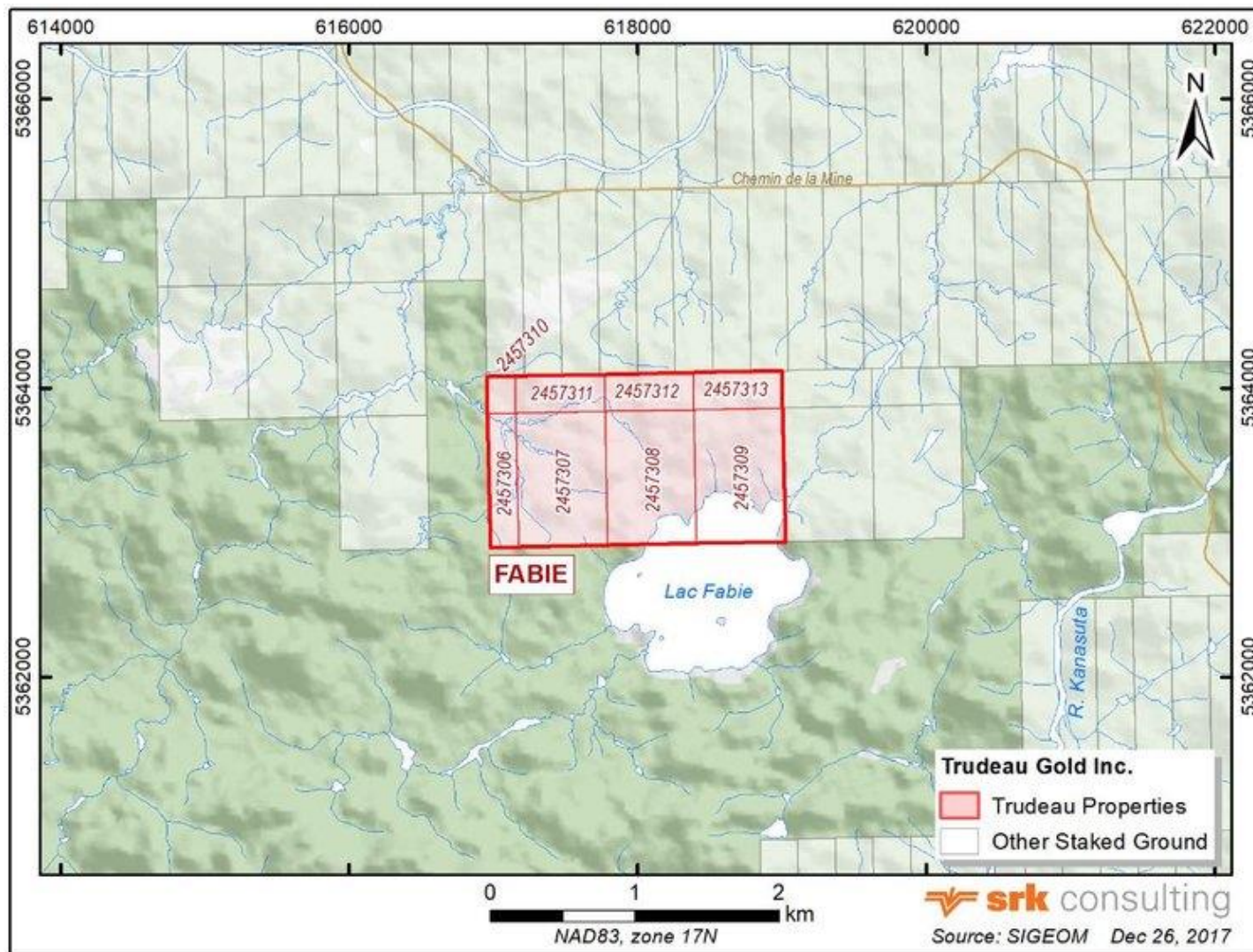
Trudeau Gold Property: Fabie, Trudeau, Eastchester Groups



- In the centre of **Noranda Camp**, a world class district of volcanogenic sulfide deposit rich in Cu, Zn and Au;
- 35-45 km to Rouyn-Noranda via highways, **10-20 km to existing mines/deposits** with easily access to all infrastructures;
- **Historically explored** for Au and VMS, with recorded mineral showings on Quebec MERN Database;
- Two type of mineralization identified:
 - Orogenic greenstone-hosted Au deposit (Fabie, Eastchester showing)
 - VMS (Anaconda tuff, Fabie SE)

	Property Name	Claims	Area (Ha.)	Mineral Potentials
1	Fabie	20	833.09	Au, VMS Au-Cu
2	Trudeau	9	359.63	VMS, Au
3	Eastchester	8	170.04	Au

Fabie Claim Group – Location and Accessibility



Accessibility

Approximately 45 kilometers northwest of Rouyn-Noranda. Access to the Fabie claim group is by two-way gravel road leading 35 kilometers from road 101 through the property from north to south. The road is maintained by several active rock quarries in the area. Numerous hunting camps and ATV trails are also present in the area and can be used to access additional portions of the property.

Local Resources and Infrastructure

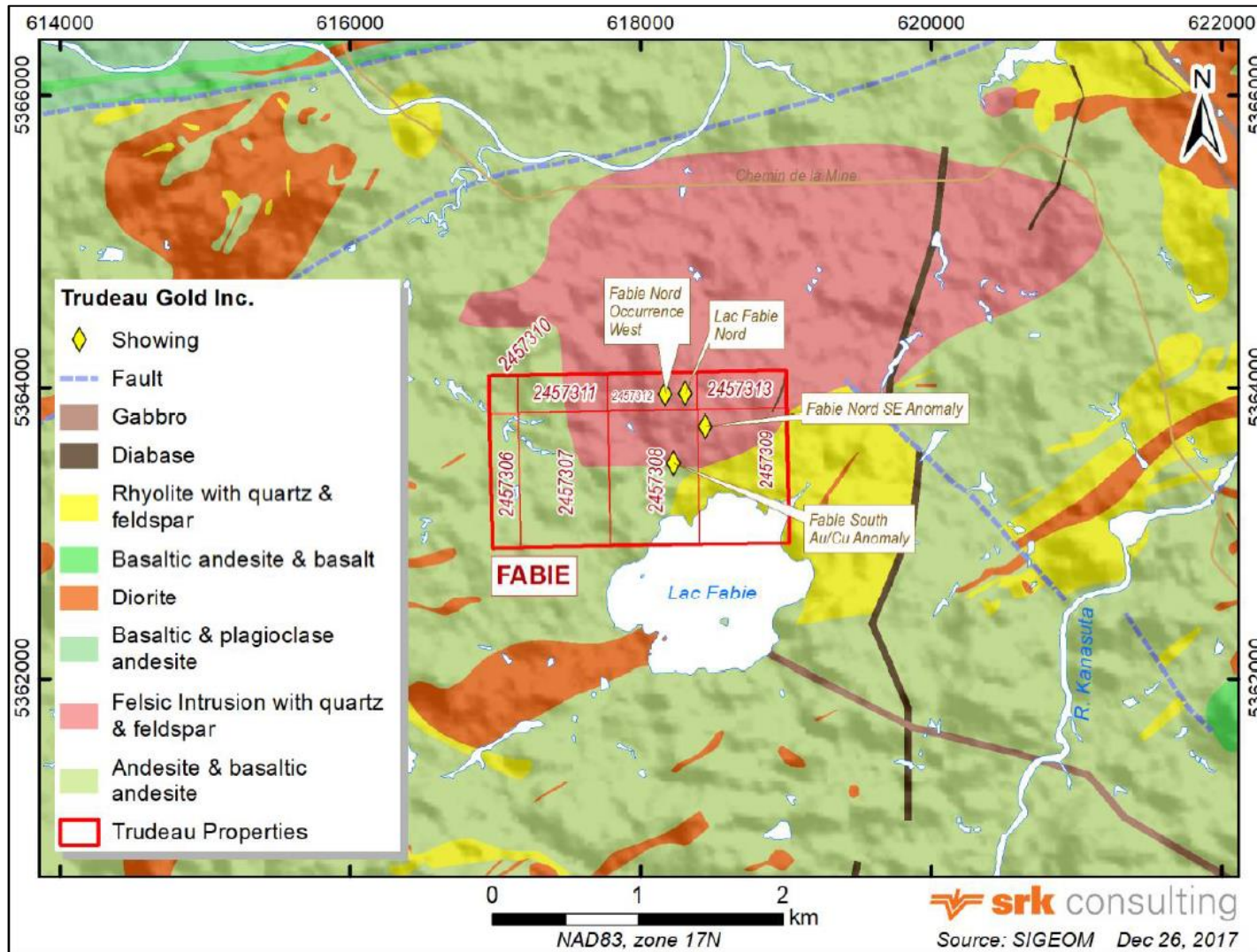
Rouyn-Noranda is the closest city to the Fabie project and hosts a population of approximately 41,000 people. It is serviced by the Quebec highway network and an airport with daily flights to Montreal. An extensive history of exploration and mining activity in the area provides locally available experienced and skilled mining laborers, contractors and suppliers. Water is available locally through Lac Duparquet and the Magusi River. A high-tension power line runs approximately 15 kilometers east of Lac Duparquet.

Climate

The Abitibi region is characterized as having a humid continental climate with long, cold winters and warm to hot summers. In January, daily temperatures average -17 degrees Celsius with an average snowfall of 52 centimetres. The average daily temperature in July is 17 degrees Celsius with an average rainfall of 97 millimetres. Conditions are such that geophysical surveys and drilling operations may operate year-round.



Fabie Claim Group – Geology and Mineralization



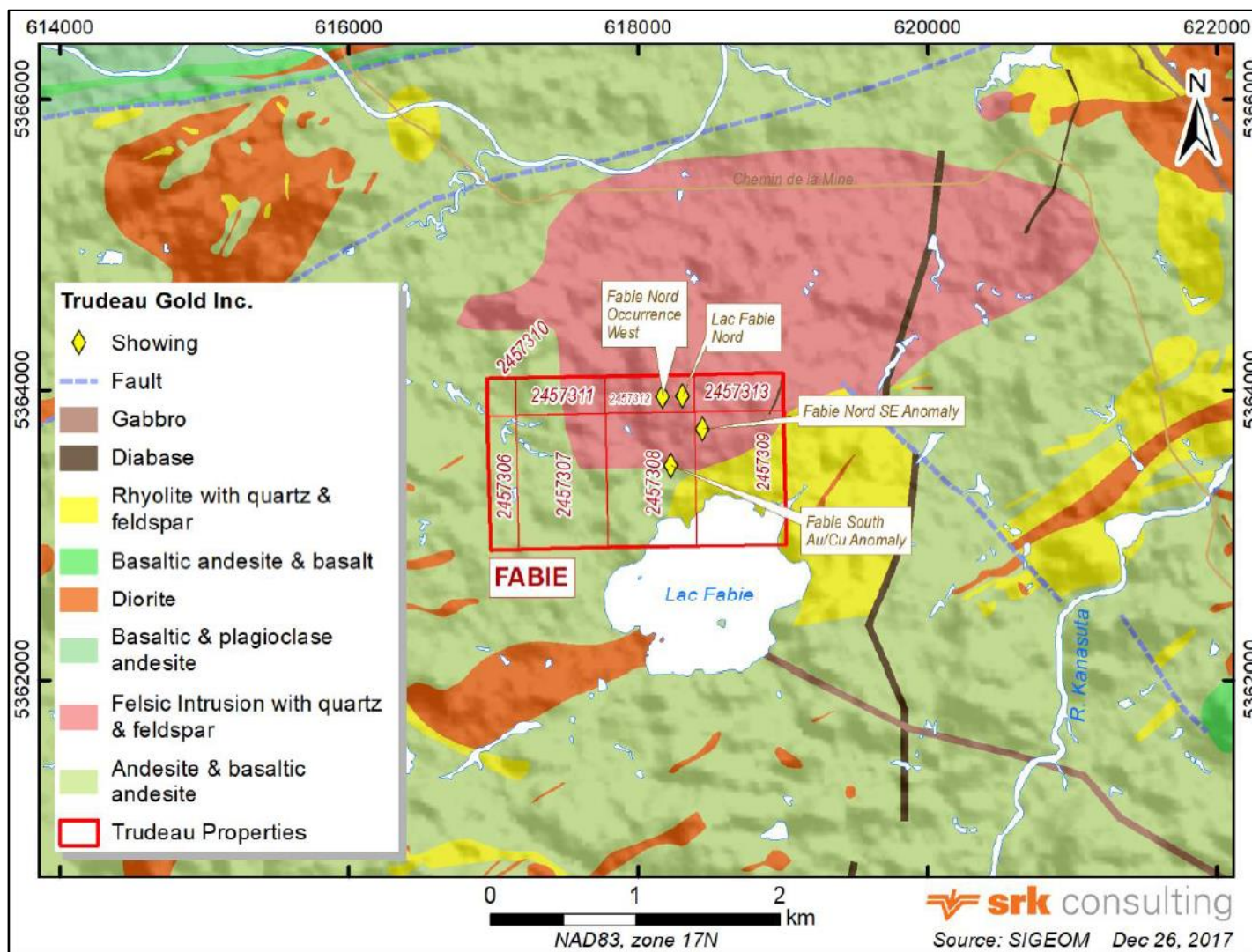
Geology

The Fabie polymetallic project is dominated by volcanic rocks. These rocks are bounded by metasedimentary rock and gneisses to the north and south, respectively. They consist of regionally metamorphosed sedimentary and volcanic rock, with local intrusions of various composition and size. The majority of lithological units encountered in the southeast part of the Fabie claim group consists of weakly-banded, green rhyolite (Formation de Duprat-Montbray 3), with minor amounts of fragmental and frothy rhyolite. The rhyolite is varied in appearance but fairly continuous and is a traceable compositional unit. This rhyolite unit (southwest of Fabie claims) is overlain by mafic volcanic rock, mostly basalt or andesite, with a few thin, discontinuous rhyolite lenses.

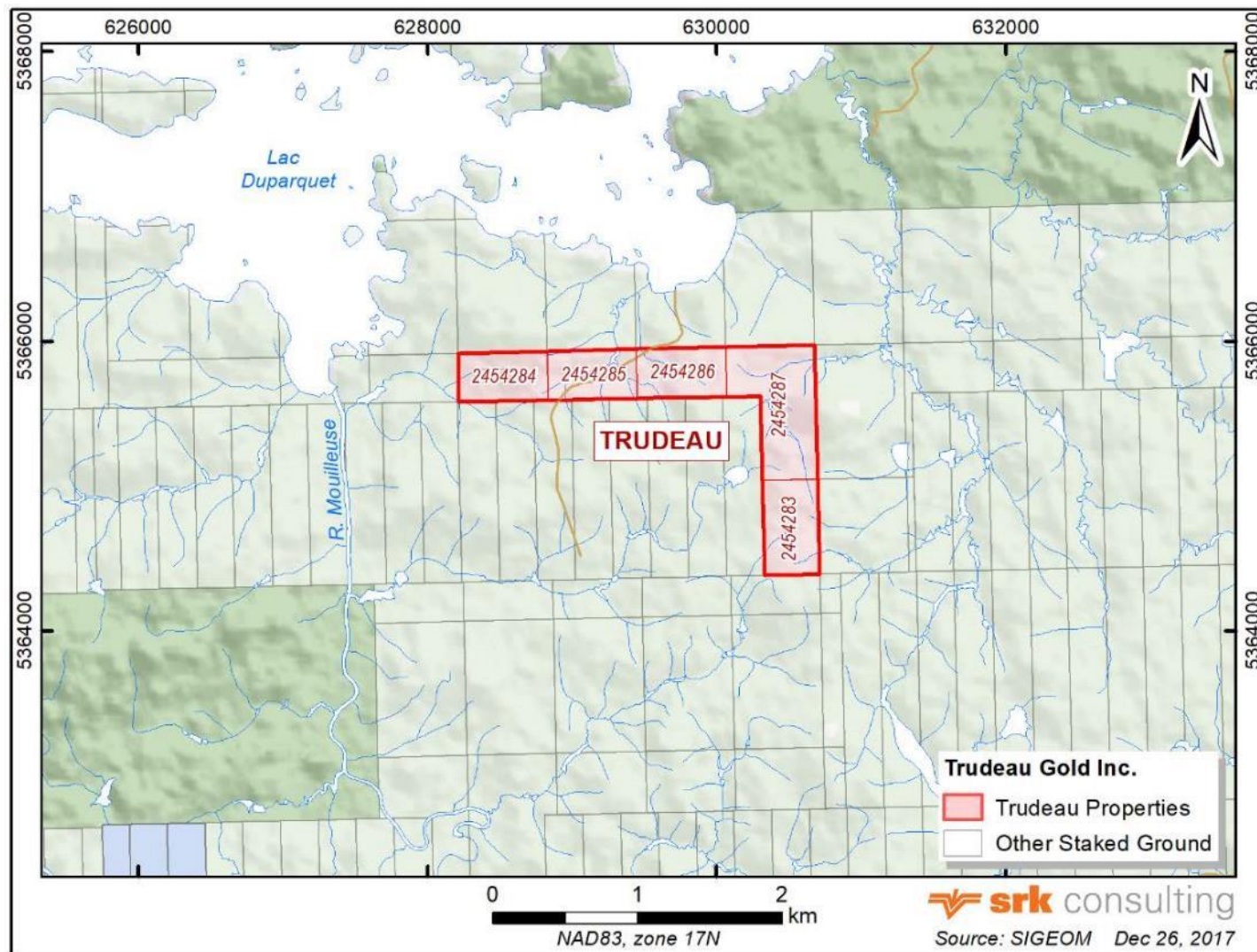
Mineralization

Two types of mineralization were encountered in the Fabie claim group: gold mineralization at the Fabie Nord showing and disseminated sulfides in rhyolite and andesitic rock in the southern part of the claim group. Mineralization in the south overlaps with a geophysical anomaly (Induced polarization/magnetic) which could be indicative of volcanogenic sulfide mineralization. Gold is hosted in or adjacent to narrow quartz-carbonate veins with associated sericite-ankerite-pyrite alteration. To date, four gold and base-metal mineralization zones or anomalous zones have been identified, based on historical exploration programs and the limited field prospecting and reconnaissance work completed by Century Metals in 2017.

Fabie Claim Group – Exploration History



- 20 claims, 833.09 Ha;
- In 1980-1990s, Ground induced polarization survey and channel sampling, discovered quartz veining system, containing gold up to 1.03-2.09 g/t;
- Three exploratory drill holes for 461m, targeting gold mineralization, intercepted minor elevated gold values from 0.5-3.0 g/t in quartz veins;
- 2017 prospecting and geophysical survey, collected 57 rock chip samples, with 9 samples returned Au values between 0.13-2.82 g/t; extended Fabie Nord Showing to west for 200 m;
- 12 geophysical anomalies identified, with eight of which were considered of interest for follow-up exploration, including trenching or drilling;
- Further exploration, including exploratory drilling will test those zones and explore their potentials at depth and along strikes;



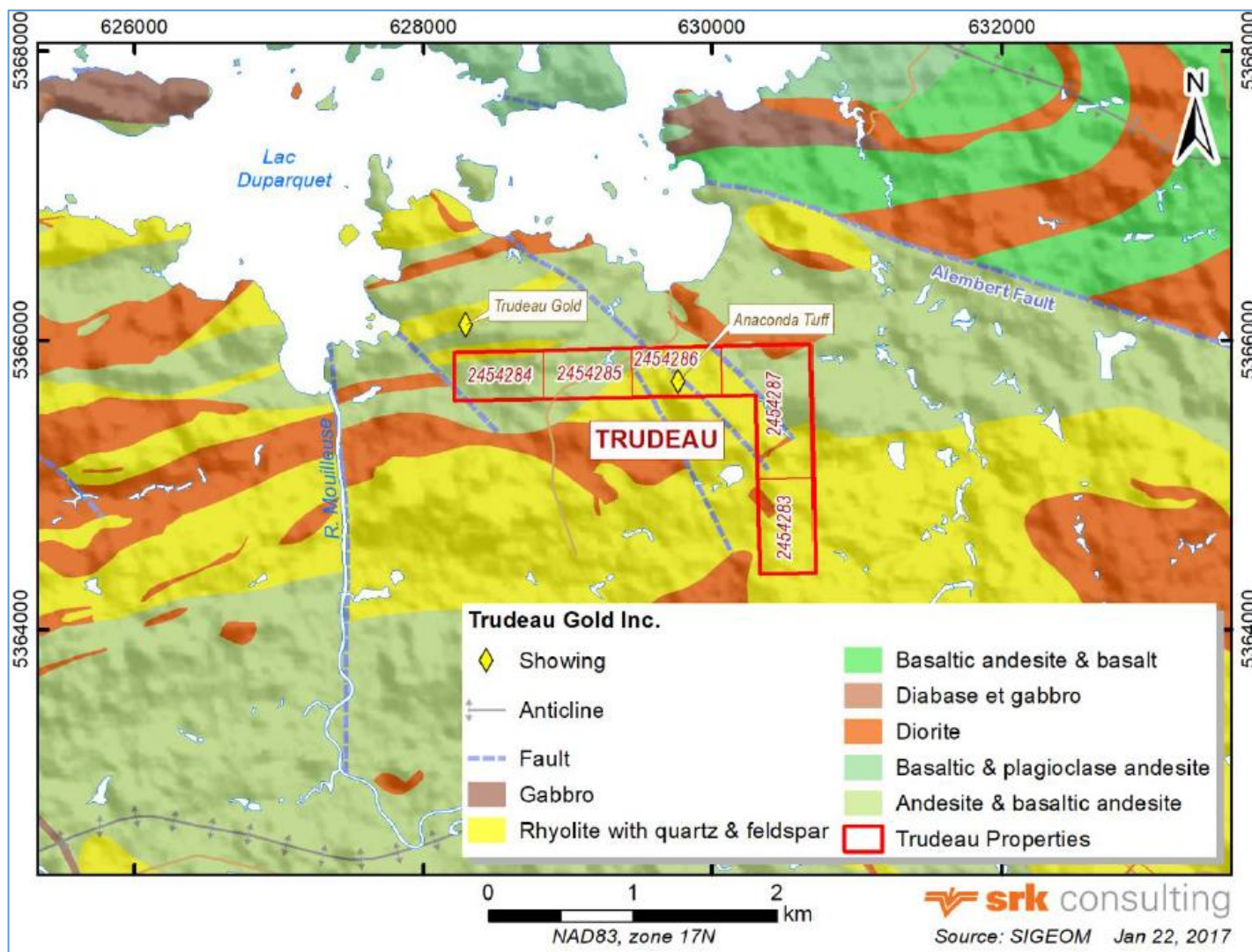
Accessibility

The Trudeau claim group is approximately 35 kilometers northwest of Rouyn-Noranda with access via the same gravel road as the Fabie claim group. Access to the site itself is relatively difficult. From road 101, the two-way gravel road leads 25 kilometers to the turn-off to a one-kilometre long hunting trail. Another four kilometers of thick bush and swampy, dammed terrain must be navigated to reach the property.

Physiography

The Trudeau project area has an elevation ranging from 270 to 290 metres above sea level. The property is dominated geographically by Lac Duparquet, a relatively small irregularly-shaped lake with many islands and inlets in the south. The lake has an area of approximately 12 square kilometers and drains to the north via the Duparquet river, which empties into Lac Témiscamingue. The general topography is gently rolling and dominated by coniferous boreal forest, with swamps in low lying, poorly-drained areas. The Trudeau property generally has low relief, dominated by thick brush and swampy terrain. Beaver dams on the Trudeau property impairs access. Reflecting the glacial history of the area, overburden is up to 25 metres thick and generally consists of glacial gravel and clay deposits; few outcrops exist. The area has been logged extensively over the decades, with second-order tree growth present in the area.

Trudeau Claim Group – Geology and Mineralization



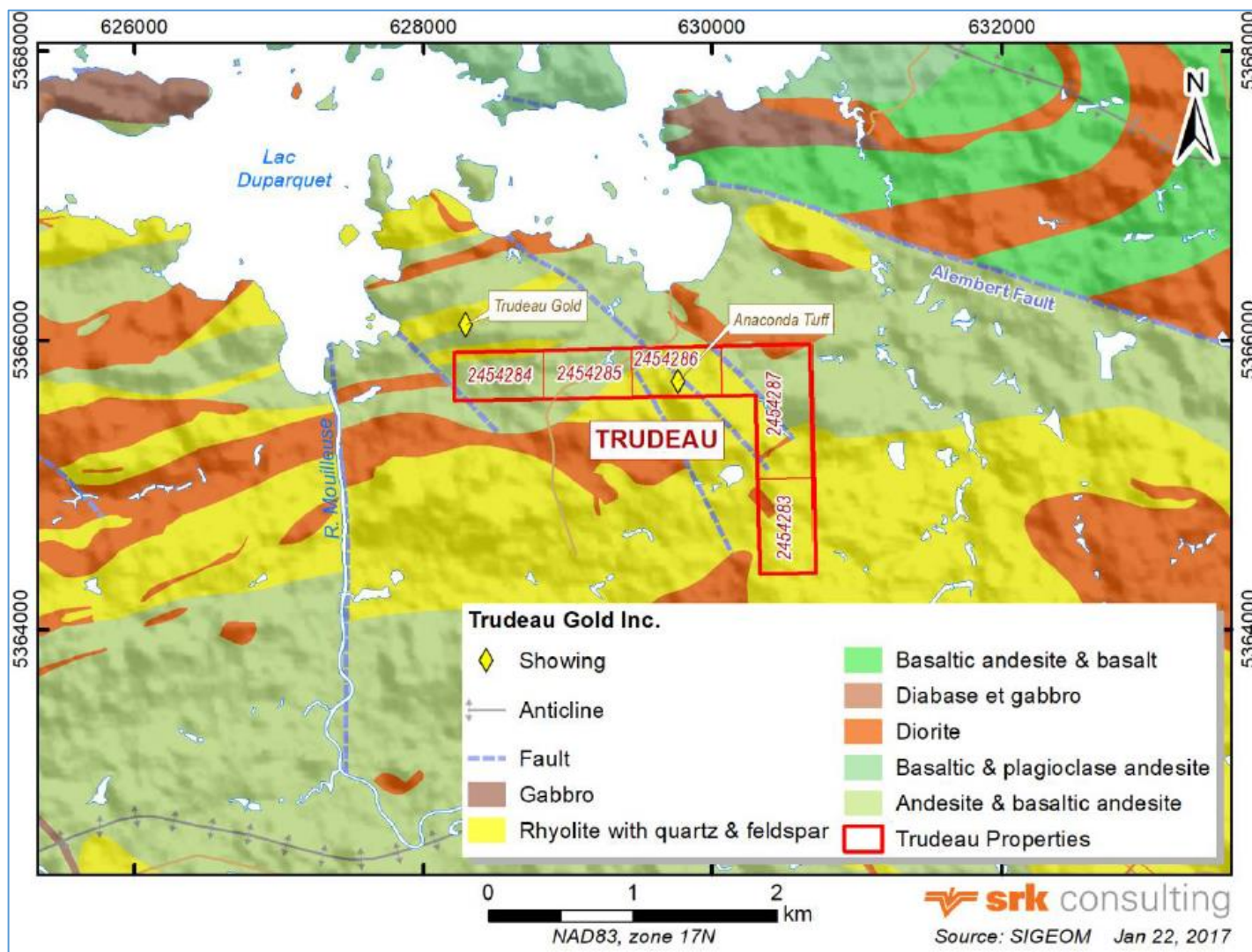
Geology

The Trudeau polymetallic project is dominated by volcanic rocks. These rocks are bounded by metasedimentary rock and gneisses to the north and south, respectively. They consist of regionally metamorphosed sedimentary and volcanic rock, with local intrusions of various composition and size. The volcanic rocks in the Trudeau claim group generally strike 070°, dip steeply and are isoclinally folded. They consist of interbedded flows and pyroclastic deposits, with a preponderance of felsic to intermediate compositions. Major faults and shear zones trend about 030°, the largest associated with the Magusi and New Insko deposits to the west. The shear zones tend to be associated with intrusive diorite bodies, as with much mineralization found to date.

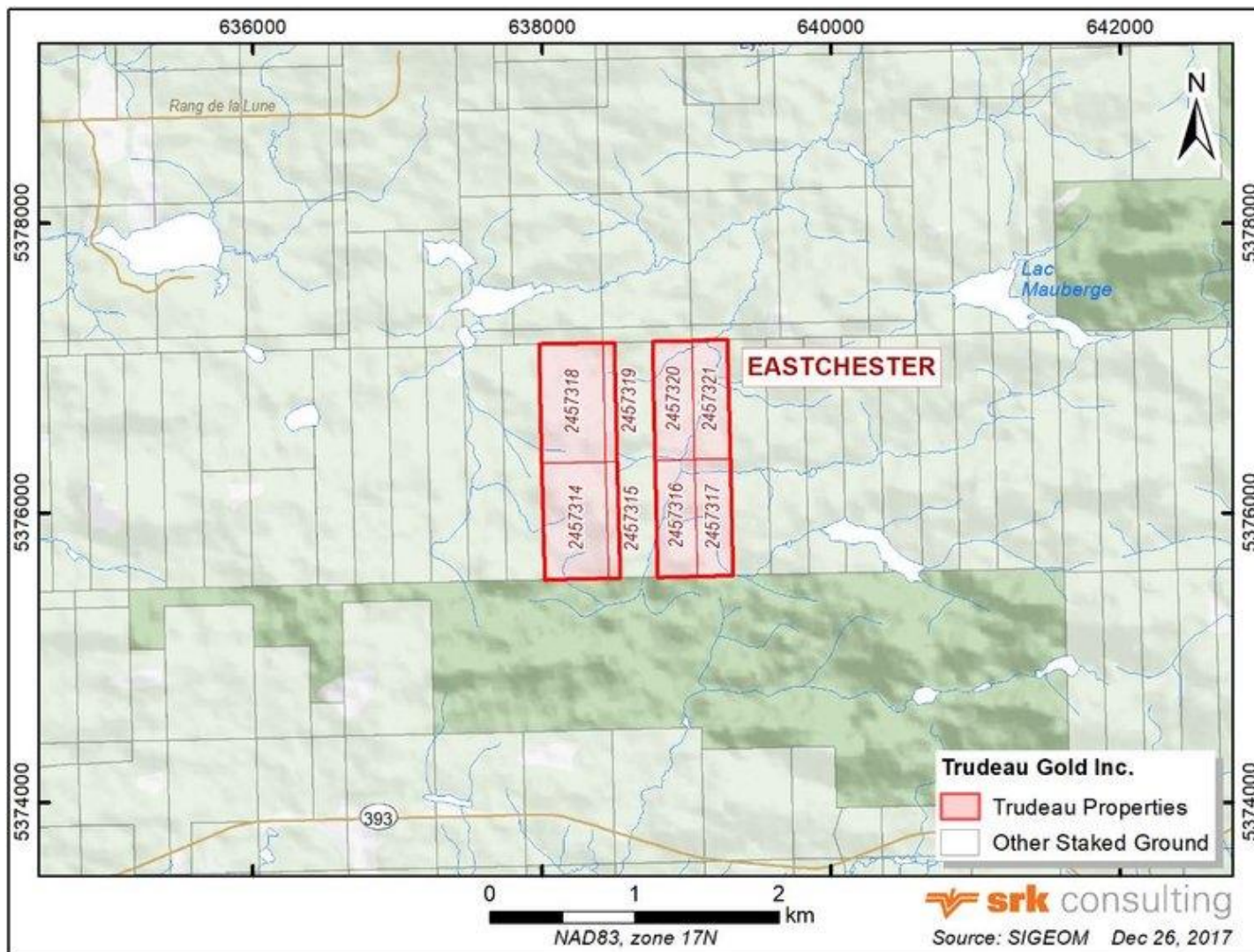
Mineralization

The Trudeau claim group is located in the center of the Noranda Volcanic Complex. The sulfide mineralization found to date on the Trudeau claim group occur entirely as disseminated sulfides, similar to much of the copper-zinc sulfide mineralization in the nearby Magusi River deposit approximately 3.5 kilometers west of the claim group. Two zones have been identified: The **Anaconda Tuff**, with mineralization related to the laminated tuffaceous unit at the contact between rhyolite and andesite units; and the **Trudeau gold** showing associated with shear zones at the contact between quartz-feldspar porphyry rhyolite and the andesitic rock.

Trudeau Claim Group – Exploration History



- 9 claims, totaling 359.63 Ha;
- The claim group located immediately north of the Destor-Porcupine Fault Zone (DPFZ), an east-west striking major regional structure associated with orogenic gold deposits. It has been explored since the 1940s.
- Three core boreholes, collared south of the current claim boundaries, encountered gold values ranging from 0.17 to 1.7 g/t over widths of 1.2 to 4.3 metres along a strike length of at least 45 metres and to a vertical depth of more than 150 metres.
- The 2017 exploration program identifies several ENE-trending shear zones/ anomalous zones, with further exploration, including geophysical survey will explore the potential of those system.



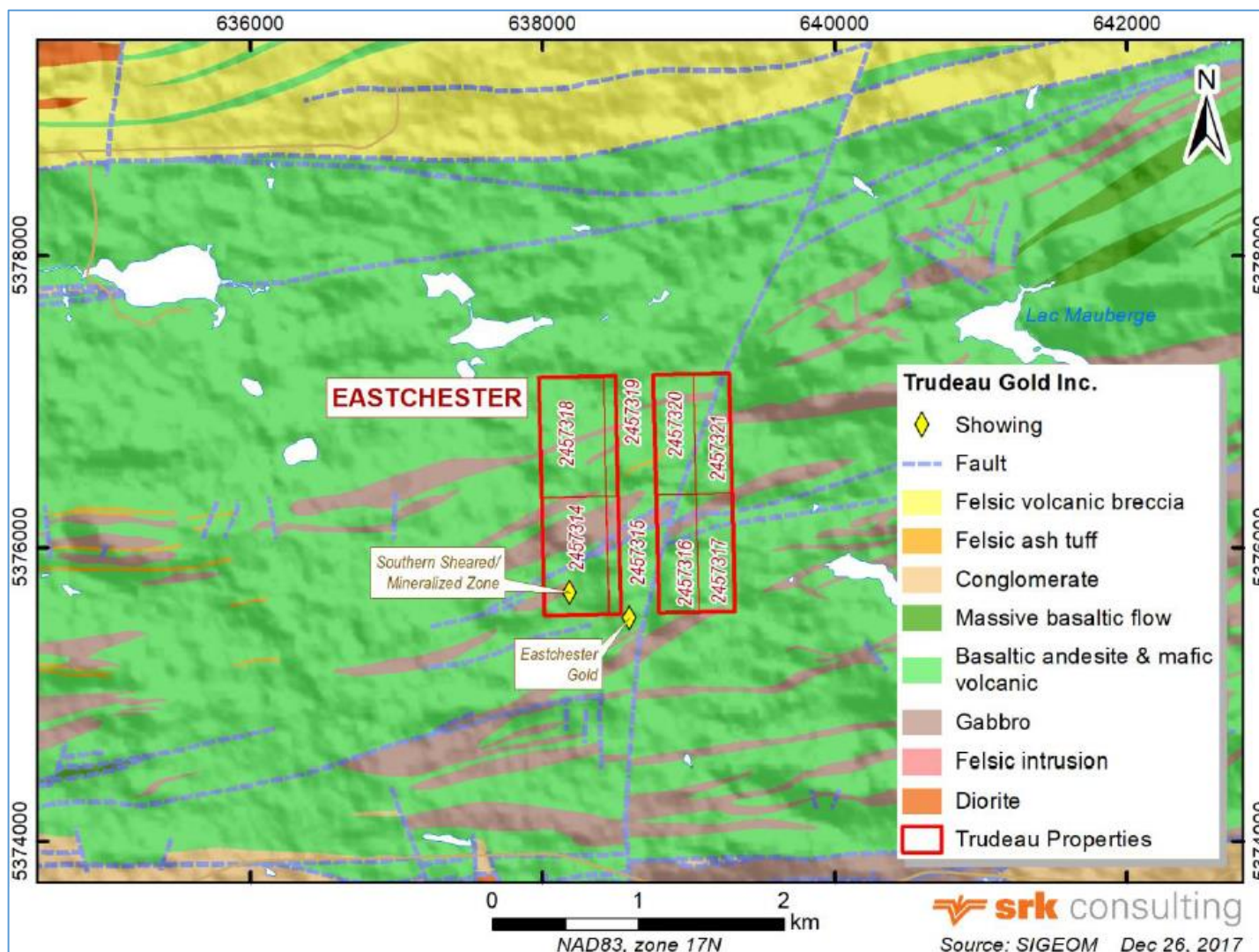
Accessibility

The Eastchester claim group is approximately 40 kilometers north of Rouyn-Noranda. The claim is five kilometers from highway 393 via a one-lane gravel road. The road passes through the properties from west to east and is actively maintained by a nearby gravel pit. Due to clear-cutting of the area's forests, access to the rest of the property is relatively easy.

Physiography

The Eastchester project area has an elevation ranging from 270 to 290 metres above sea level. The property is dominated geographically by Lac Duparquet, a relatively small irregularly-shaped lake with many islands and inlets in the south. The lake has an area of approximately 12 square kilometers and drains to the north via the Duparquet river, which empties into Lac Témiscamingue. The general topography is gently rolling and dominated by coniferous boreal forest, with swamps in low lying, poorly-drained areas. The Eastchester property has been clear-cut and features higher relief towards the south of the property.

Eastchester Claim Group



Geology

The Eastchester claim group is located immediately north of the Destor-Porcupine Fault Zone (DPFZ), an east-west striking major regional structure associated with orogenic gold deposits. This area is also prospective for volcanogenic sulfide mineralization, although there are no known felsic volcanic rocks in the area and the more favorable Blake River Group sequence occurs further to the south. The property claims are underlain by alternating sequences of Archean metavolcanic (basalt) flows and gabbro locally termed the Deguisier Formation that represents the eastern strike extension of the Kinojivis Group in Ontario.

Mineralization

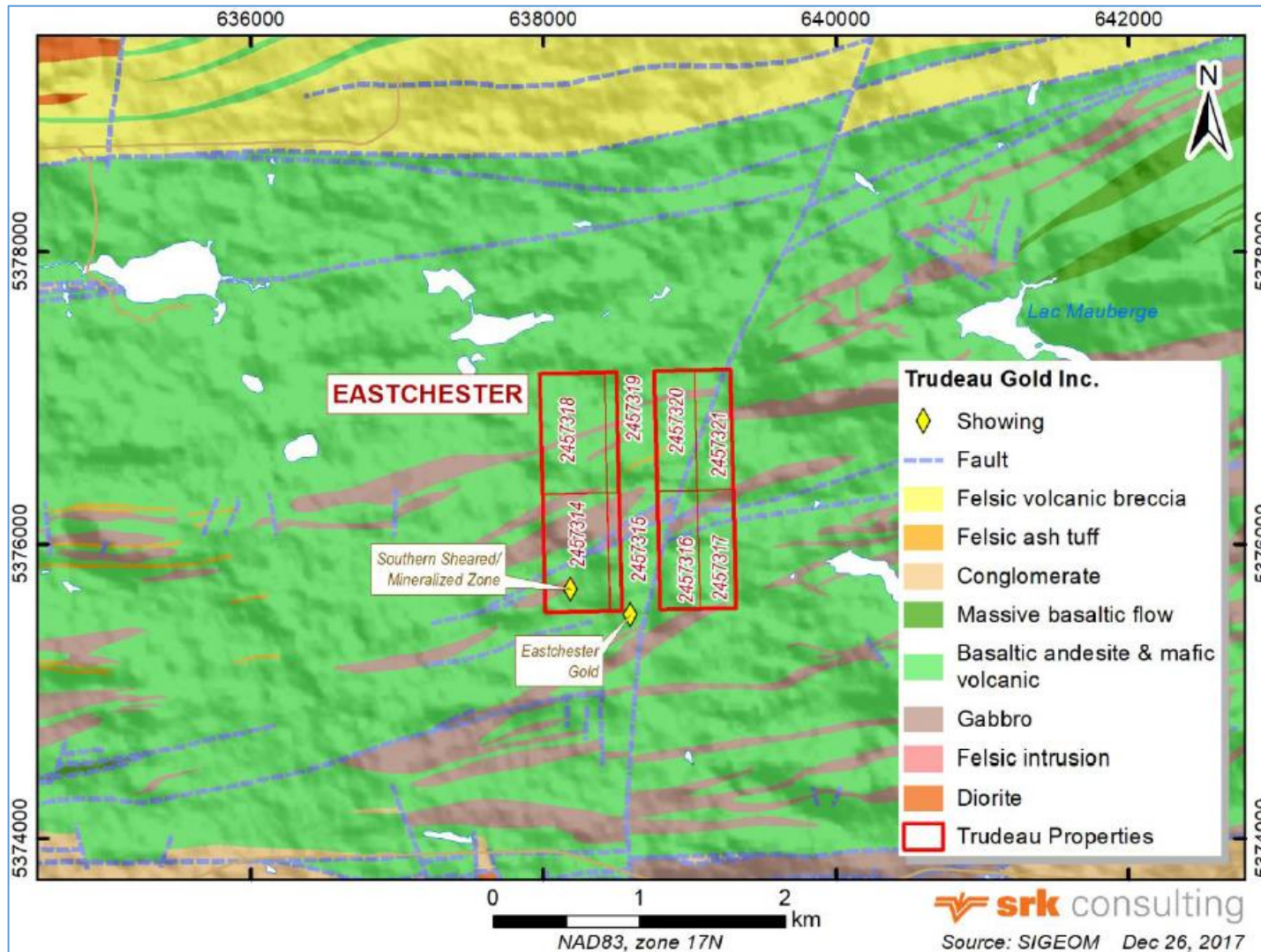
The structures in the Eastchester claim group are inferred to be splays from the main break Destor-Porcupine Fault Zone and may resemble other fault/shear systems.

Eastchester Gold Showing

The Eastchester gold showing was discovered in 1945 by Eastchester Mines through surface prospecting and geophysical surveying followed by exploratory drilling. The most significant anomalous gold values were encountered within a 3.7- to 4.3-metre wide pyritic tuff unit located approximately 10 to 100 meters south of the Century Metals property boundary. Mineralization is reported to occur as vein breccia associated with a fault and silicification as the dominating alteration type causing intense bleaching of host rock



Eastchester Claim Group – Exploration History



- 8 claims, totaling 170.04 Ha;
- Extensive exploration in 1960-1970s, targeting Cu-Zn mineralization, including geophysical survey (IP, EM) and with more than 22 holes were drilled, identified the Anaconda Tuff as primary mineralization system; regional prospecting discovered Trudeau Au showing, with rock chip sample grading 8.9 g/t (0.26oz/t);
- Limited prospecting and reconnaissance in 2017 encountered massive basalt and rhyolite system, with varies amount of disseminated sulfide. Rock chip samples contains 0.045% Cu, confirmed historic targets;
- Additional exploration, including the geophysical, geochemical survey, and detail geological and structural mapping to identify the hosting structural of gold mineralization and extension of Anaconda tuff, follow with drilling to explore the potentials.



Interpretations and Conclusions

- The project is an early-stage gold and base metal exploration project; the claims locates in the center the Abitibi-Témiscamingue and Nord-du-Québec, which is one of the most productive mineral regions in the world, which hosts several major mines and has over a century of continuous mining history.
- Favorable geological background for gold-rich volcanogenic sulfide and orogenic gold deposits.
- The underlying geological setting is similar to gold and polymetallic sulfide deposits regionally;
- Scattered anomalous copper, zinc and gold values were encountered in rhyolite at the Fabie South anomaly and the Anaconda Tuff showing in the Trudeau area. These anomalous values attest to the existence of hydrothermal sulfide mineralization in these systems;
- similar hydrothermal alteration to that associated with volcanogenic sulfide deposits;
- Major structural/alteration zones with the quartz feldspar porphyry, similar to the gold-bearing system in the Destor-Porcupine Fault Zone;
- Geophysical anomalies coincide with outcropping areas of samples with anomalous copper and gold values or areas targeted with historical drilling; indicating that geophysics can be a useful tool to target exploration.
- Chargeability/resistivity anomalies were delineated on the Fabie claim group,
- Conductivity and polarization anomalies were historically discovered near the Trudeau gold showing, and
- historical geophysical anomalies were found in the western extension of the Anaconda Tuff. These anomalies generally coincide with outcropping areas of samples with anomalous copper and gold values or areas targeted with historical drilling.
- In the opinion of SRK, the character of the early stage Fabie-Trudeau-Eastchester polymetallic project is of sufficient merit to recommend a two-stage exploration program designed to identify, prioritize and test exploration targets on the three separate claim groups.



Recommended Exploration

1. Fabie Claim Group

- Geological mapping and structural study over the entire claim group, with special attention to the chargeability/conductive anomalies and targets previously identified to fully understand the nature of these anomalies
- Geophysical surveys to cover the southern claim group and the area not covered in 2017
- Trenching and geochemical sampling over all outcropping areas, especially over any mineralization and alteration zones showing quartz/carbonated veins or visible sulfide mineralization.

2. Trudeau Claim Group

- Review and compile all geological and geophysical data with an emphasis on historical regional and local geophysical data to build knowledge of the lithological system and geophysical background. From the data gathered, generate a suitable mineralization model and identify exploration targets.
- Geological mapping and structural study over the whole area, with special attention paid to alteration zones and sulfide mineralization previously delineated.
- Geophysical surveys over the central part of the property where the Anaconda tuff (contact zone between rhyolite and basalts) is located.
- Geochemical sampling and study to identify geochemical patterns, especially along the Anaconda tuff and the fracture/alteration zones related to the Trudeau gold showing.

3. Eastchester Claim Group

- Geological mapping and structural study over the whole area, with special attention in the southern area of the claim group where fault systems were delineated and tested by historical drilling.
- Geophysical surveys over the whole area to define the conductivity or chargeability anomalies for further testing.
- Exploratory core drilling to test more promising targets, especially the northern extension of the Eastchester gold showing to the south.



Estimated Cost for the Proposed Exploration Program

Work Program	Amount	Unit	Unit Cost (C\$)	Total Cost (C\$)
Phase I - Initial field program				
Planning and supervision				4,000
Data compilation				10,000
Field equipment				25,000
Geology and supporting team (6 total)	50	days		40,000
Line-cut and access road to Trudeau	30	line km		10,000
Ground IP and DTEM survey (100x25m)	30	line km		50,000
Geological/structural mapping				20,000
Geochemical sampling and assaying	500	samples		35,000
Mechanized trenching	600	metres		10,000
Mineralogy/metallurgical testing				8,000
Reporting				10,000
Contingency (10%)				22,200
Phase I - subtotal				244,200
Phase II - Exploratory Drilling				
Geology and supporting team				40,000
Exploratory core drilling (all inclusive)	2,000	metres	400	800,000
Technical Report				20,000
Geochemical sampling and assaying	1,000	samples		50,000
Field equipment				30,000
Contingency (10%)				94,000
Phase II - subtotal				1,034,000
Total				1,278,200



REYNA **SILVER**

RSLV.TSXV

Email: jorge@reynasilver.com

200 University Avenue, Suite 1401

Toronto, Ontario, Canada, M5H 3C6

Tel: 1-416-977-3188

Fax: 1-416-977-8002

www.reynasilver.com